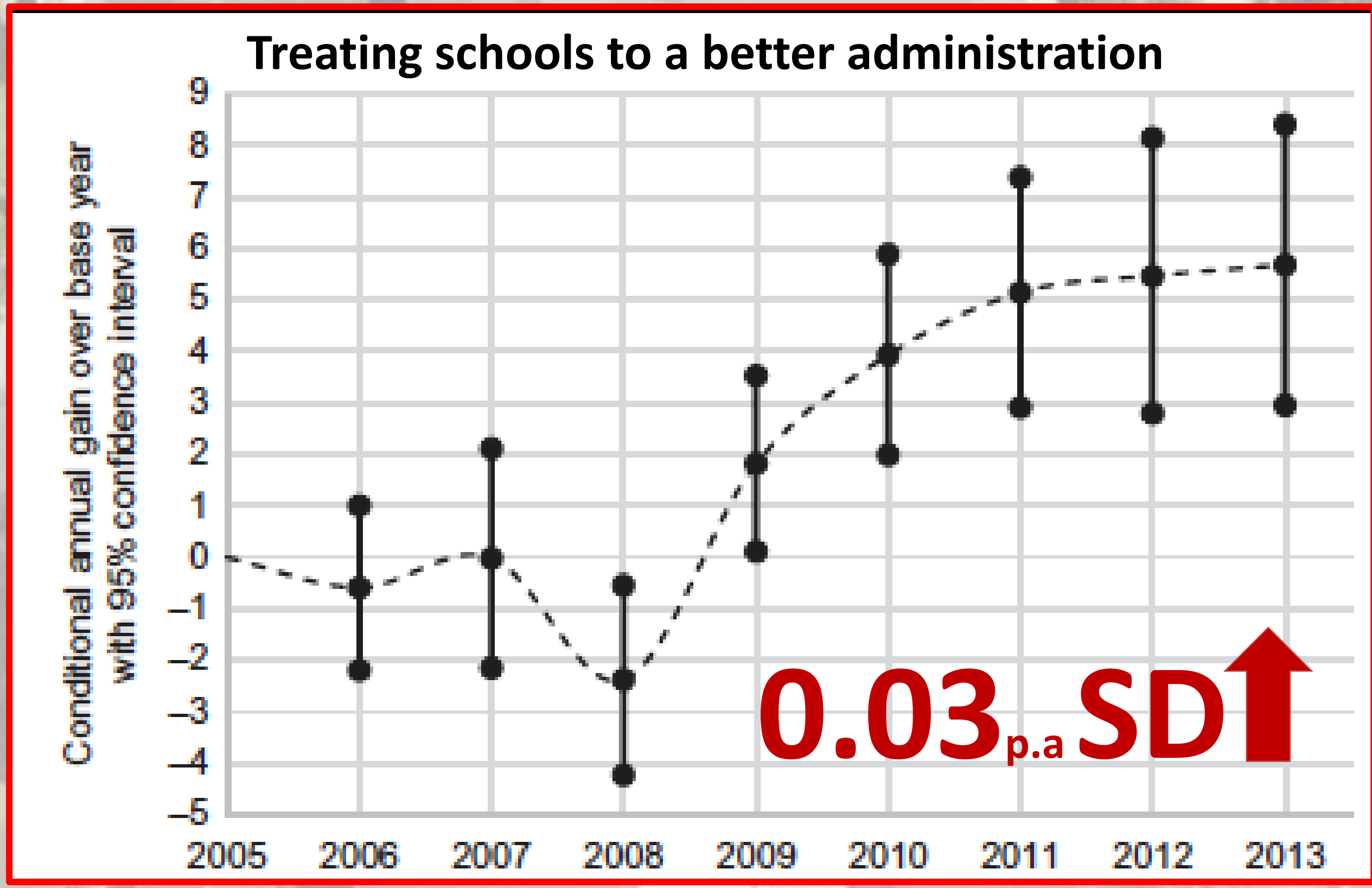
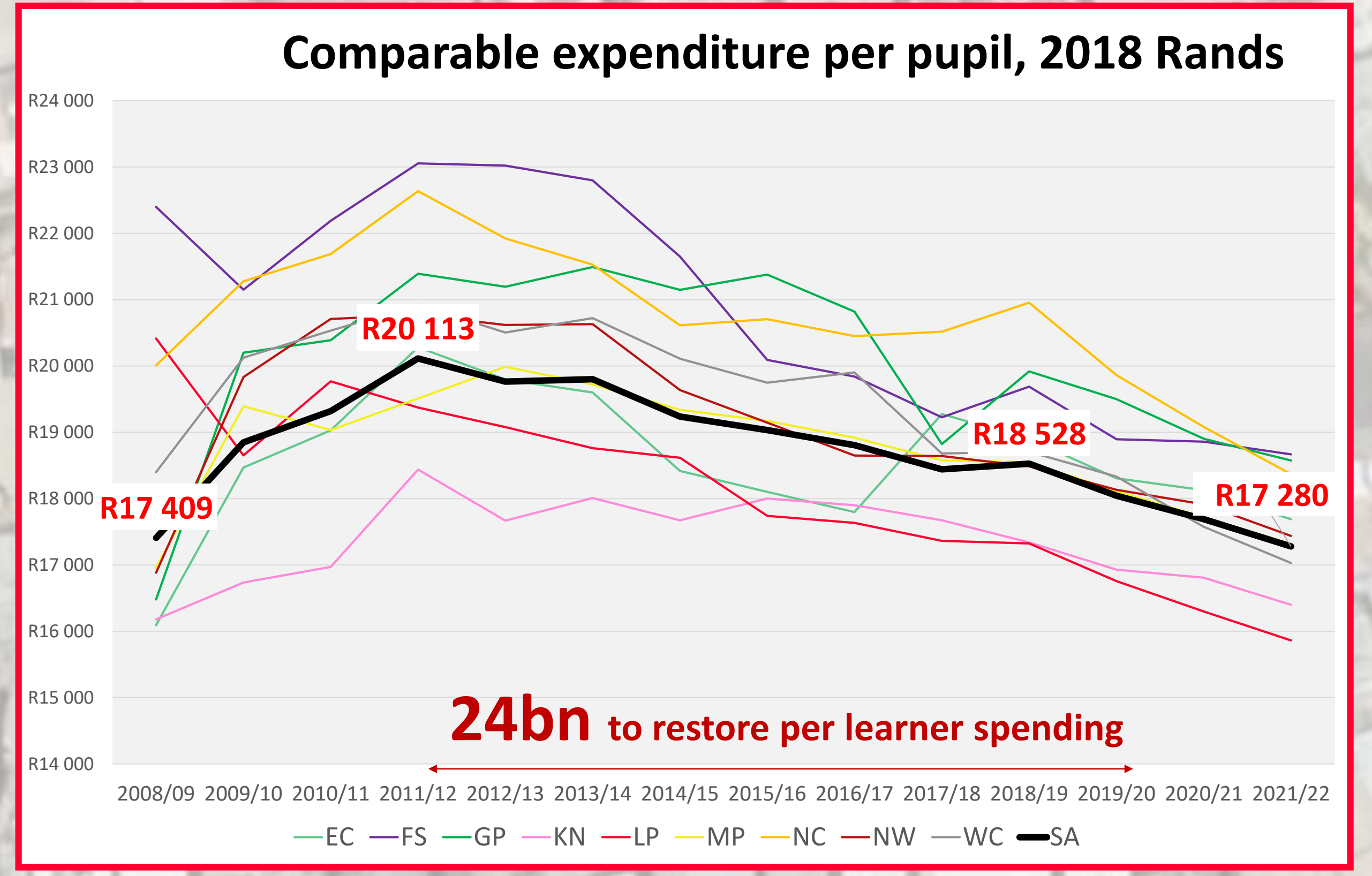


Administrative efficiency



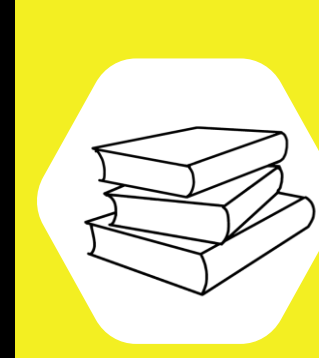
Government level

Constrained fiscus

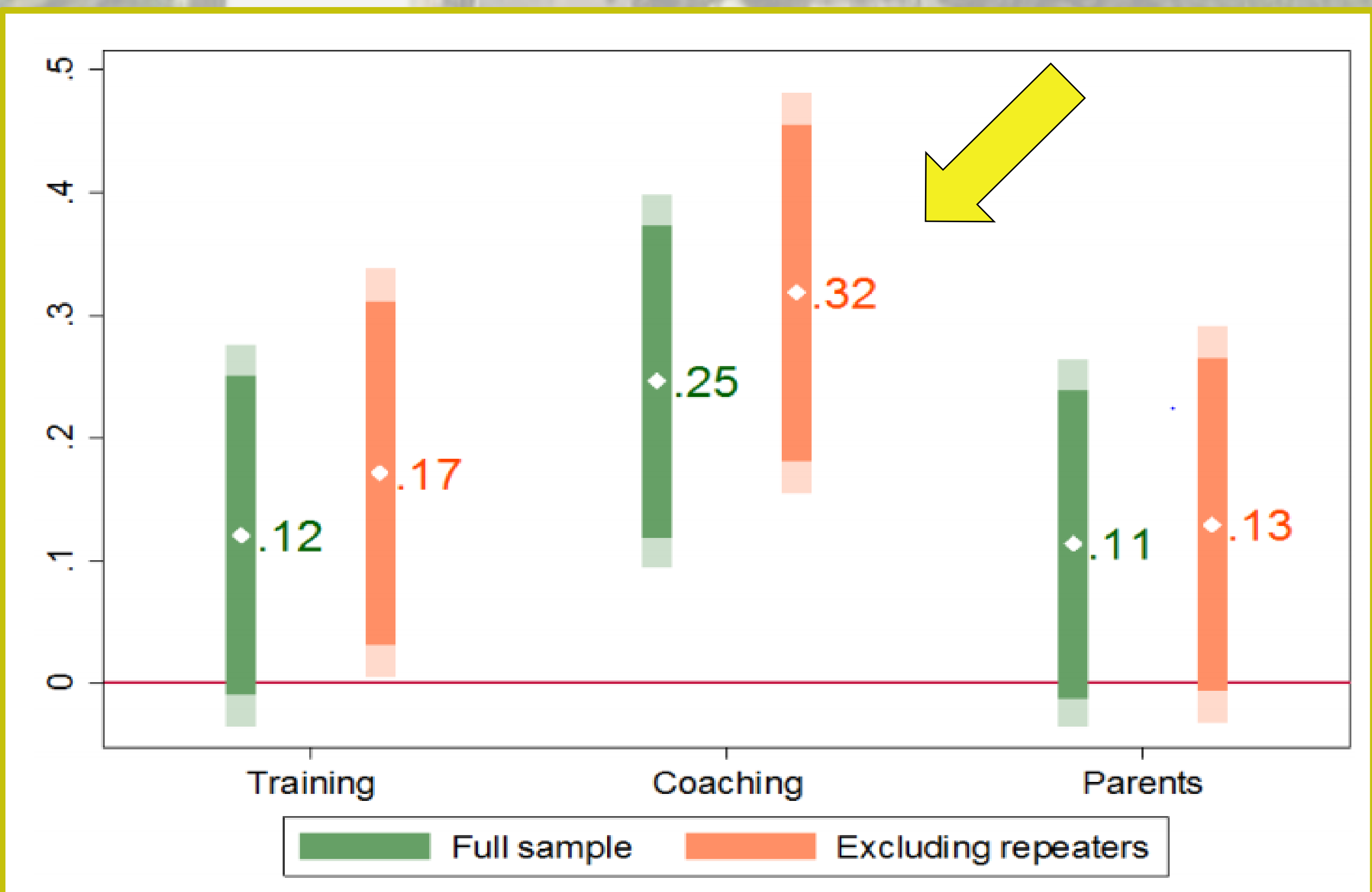


Can we reduce LEARNING INEQUALITIES?

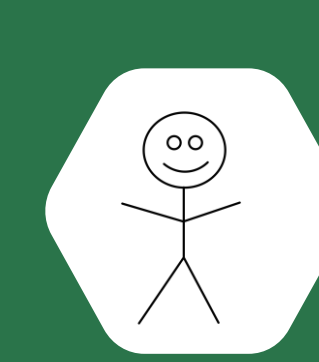
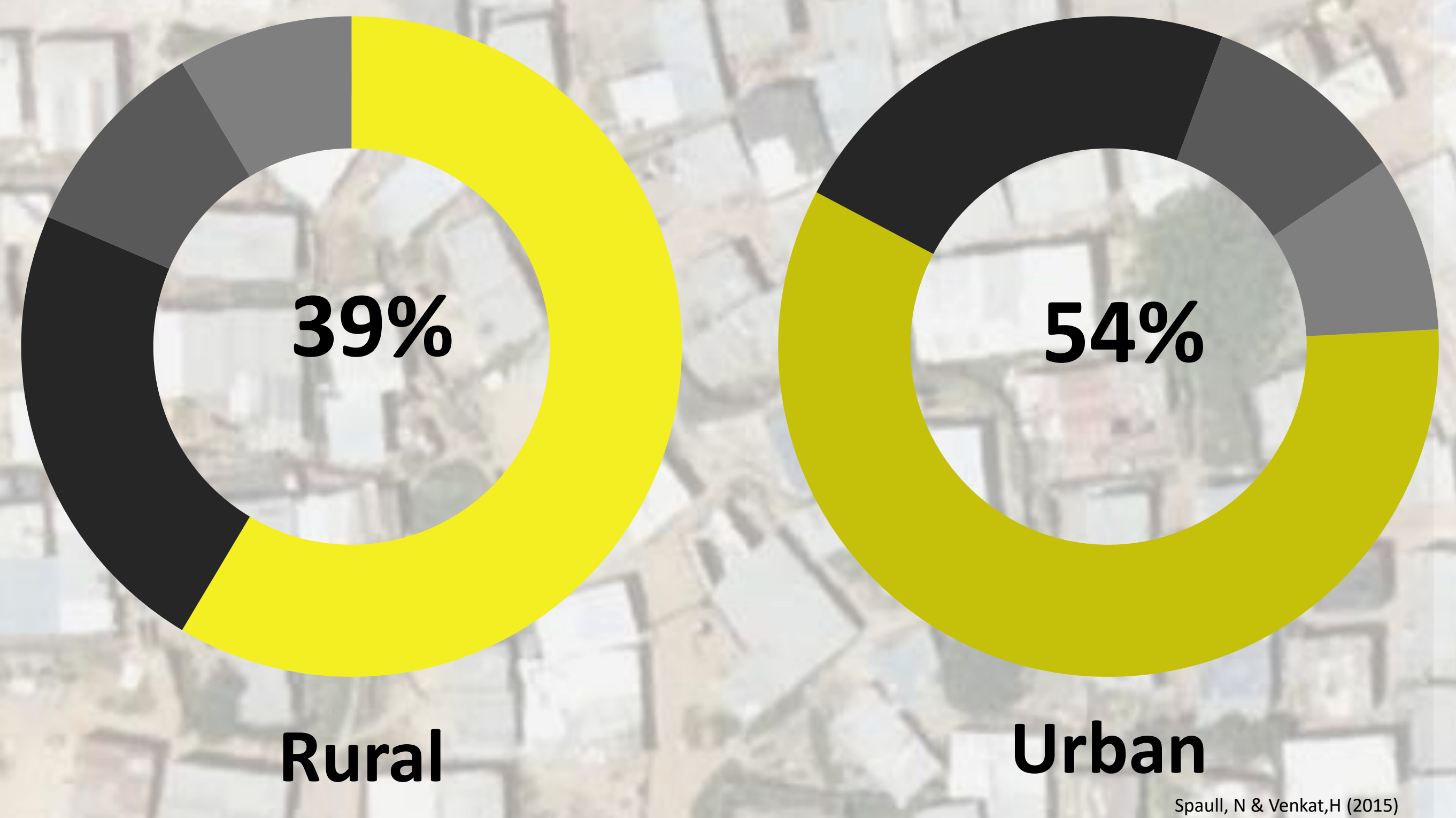
School level



Teacher training/coaching works



Teacher score on grade 6 test

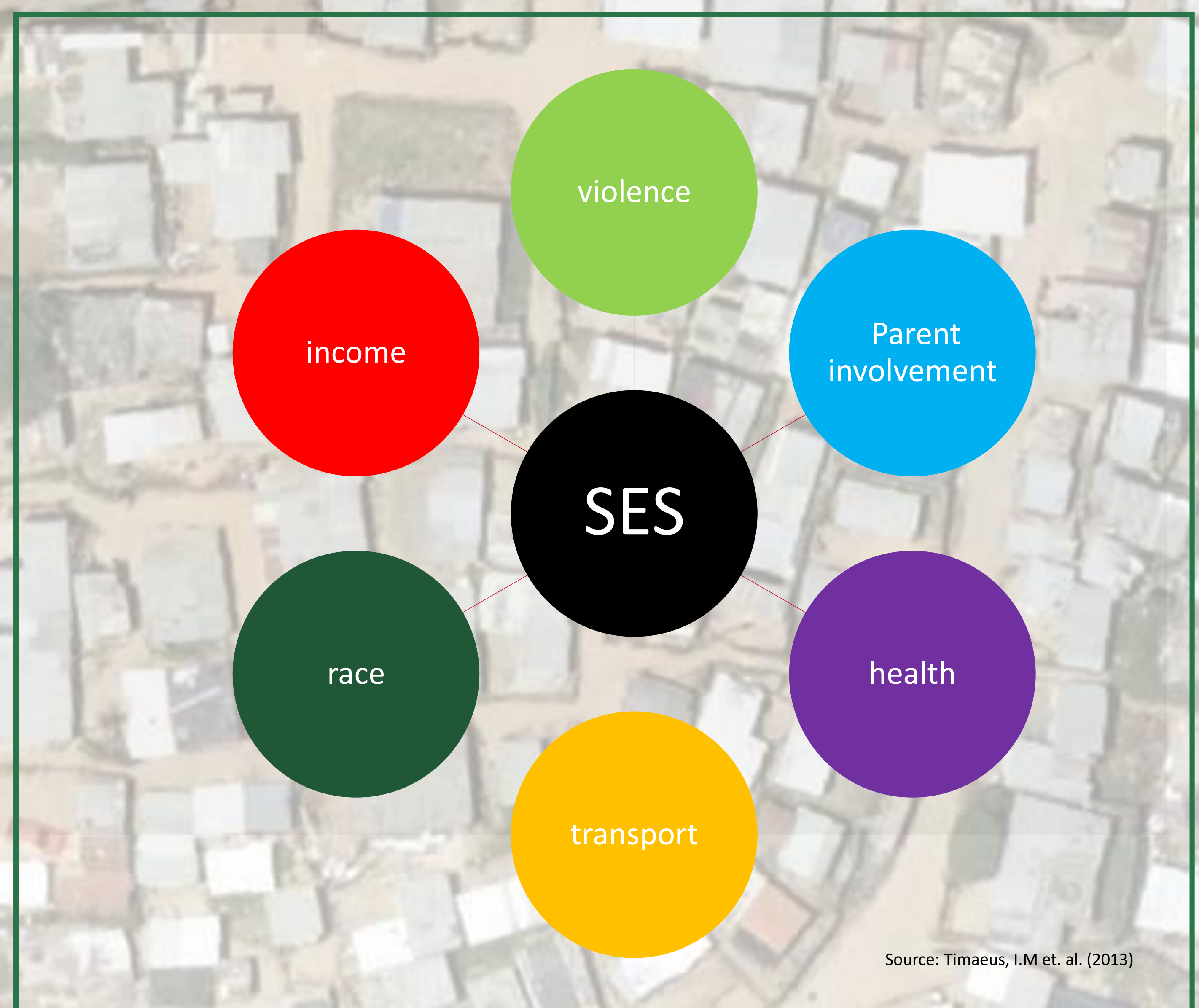


Individual level

Interventions alleviating the effects of SES



Multiple intersecting layers of disadvantage



Policy recommendations

- Minimize the effect of SES (nutrition, transport etc.)
- More evidence (Systemic evaluation, RCTs)
- Materials + training + teaching-at-the-right-level
- Early learning focus
- Improve administrative efficiency

