



Urban development & human settlements

Edgar Pieterse | 10 JULY 2018



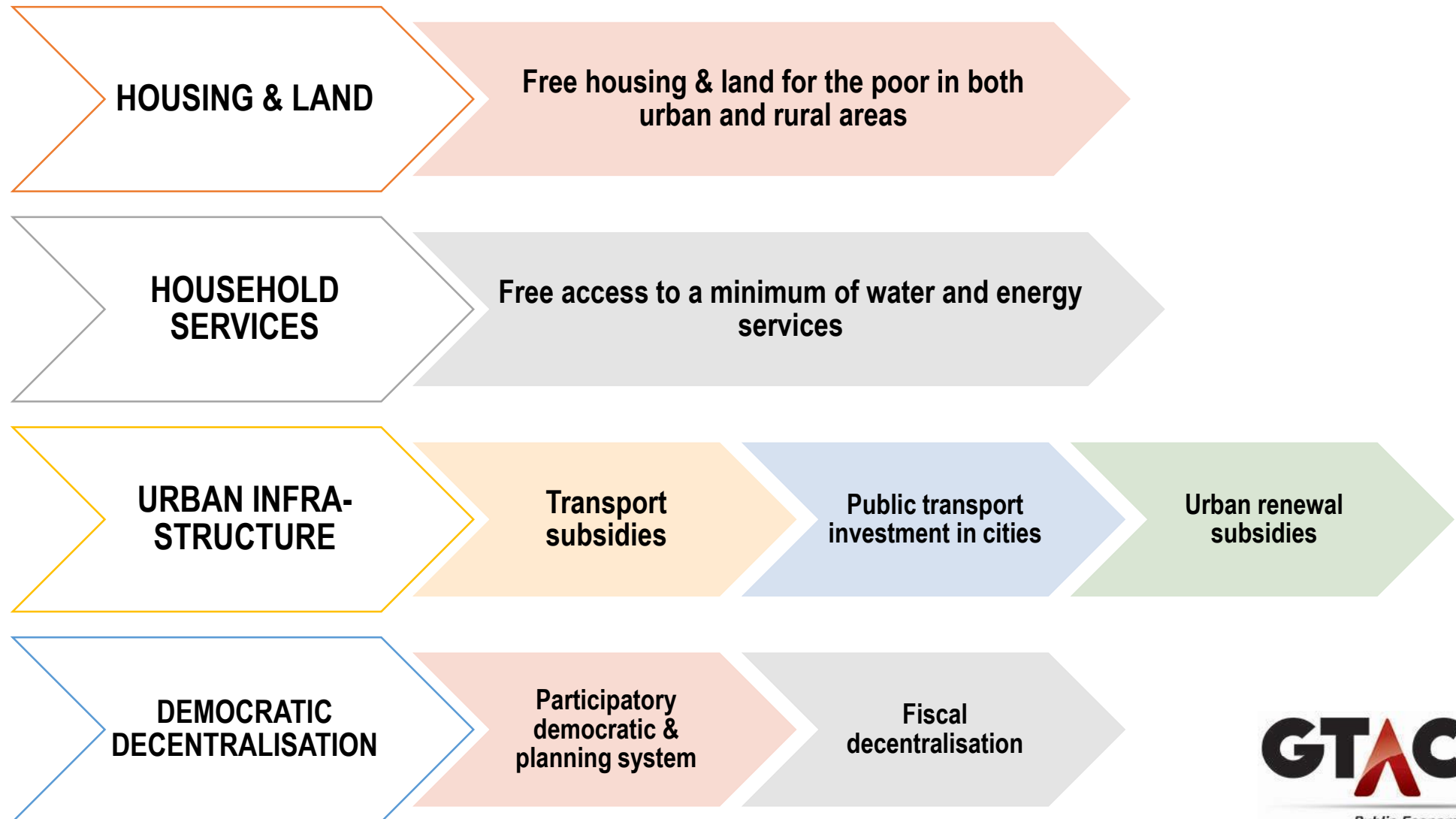
Public Economics

Winter School 2018

AFRICAN CENTRE FOR CITIES



THE POST 1994 URBAN REFORM AGENDA

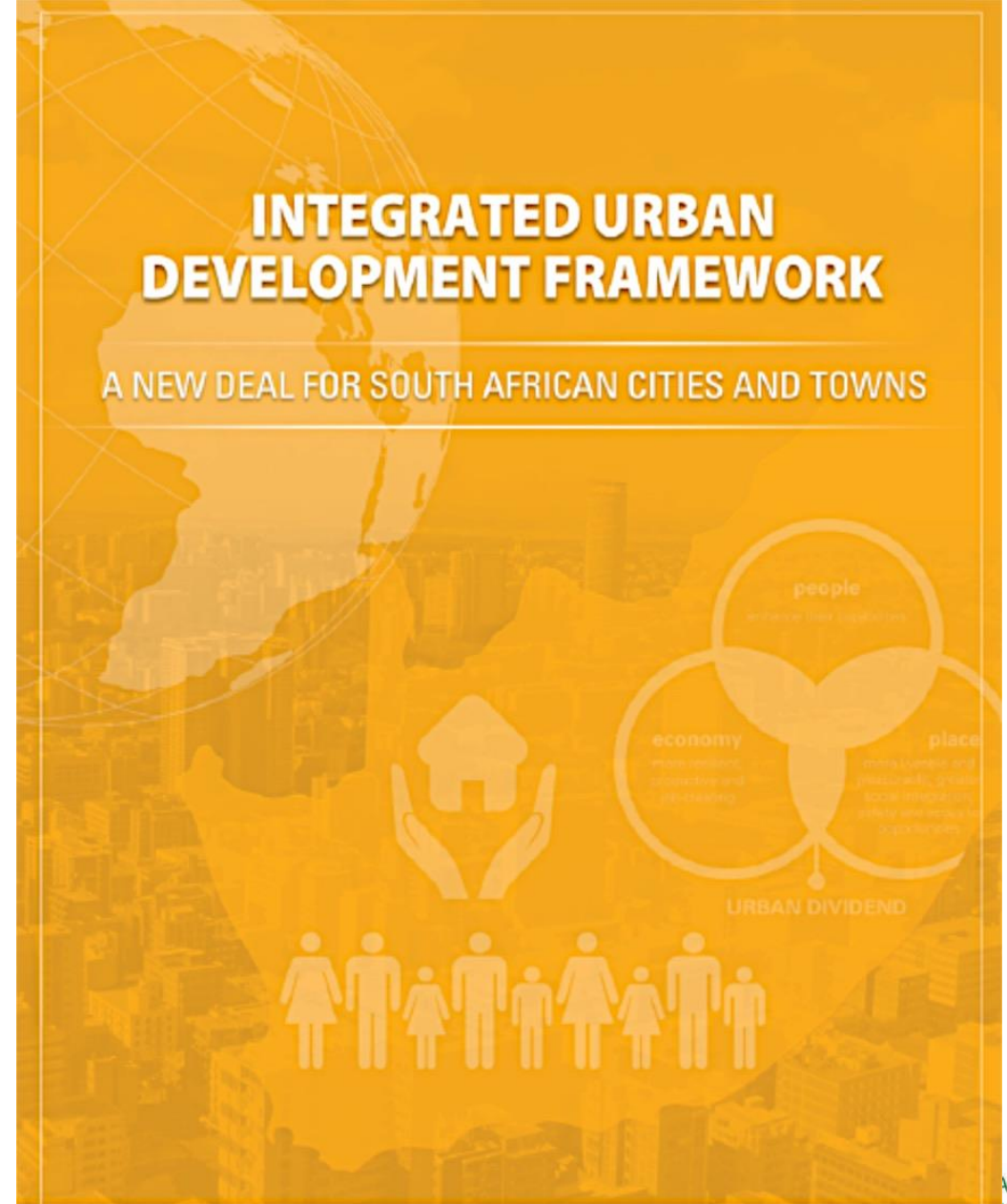


Since 1994, the state has provided over 4 million subsidies & built close to 3.5 million units...

Despite this being one of the largest and most ambitious public housing programmes in the world, it has had the paradoxical effect of worsening urban fragmentation, segregation & spatial inequality...

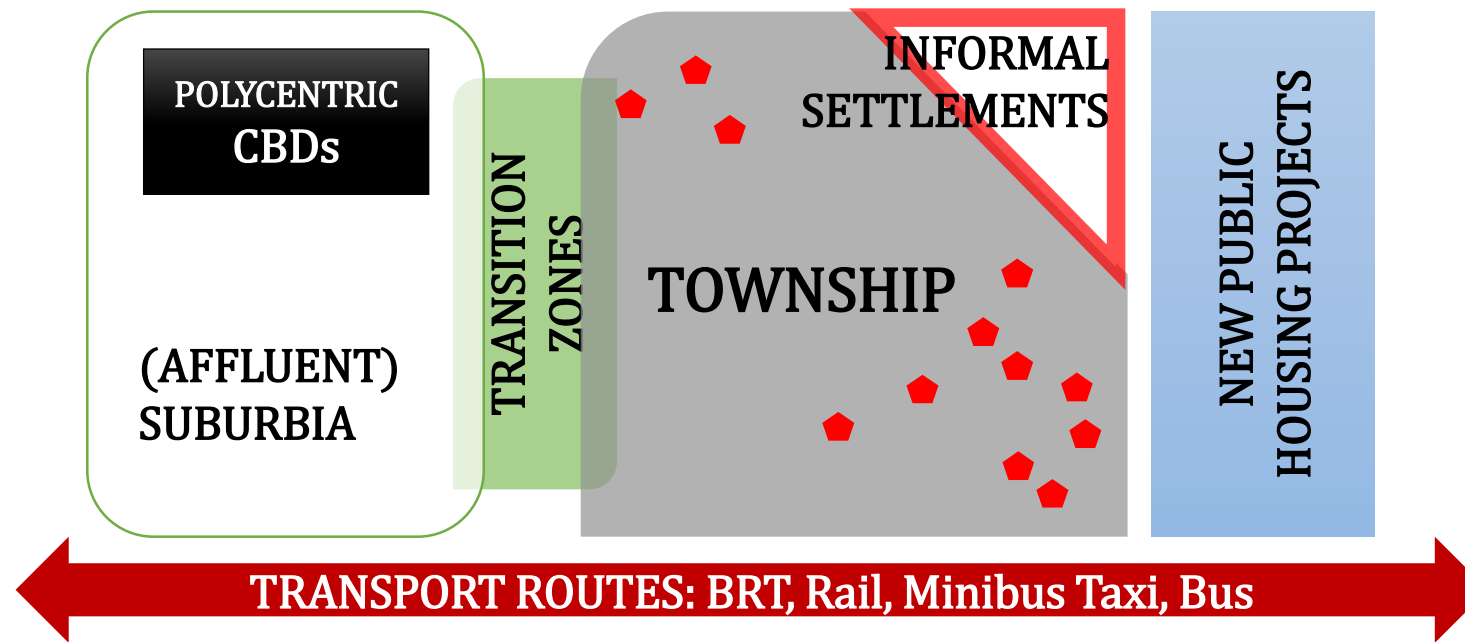


South Africa is trapped in a PARADOX: the more it pursues redistributive social policies that reduces material poverty, the more is worsens spatial inequalities, which in turn reinforces economic and cultural marginalisation.



RETURN ON INVESTMENT





Source: ACC & Living Cape, WCPG

Return on investment must advance

1. Intensified connections across human settlement typologies
2. Consolidate & blend uses and typologies that are more integrated
3. Regrow urban tissue through cultural confrontation and exchange
4. Underwrite these imperatives with a sustainability narrative >> a new city for new times...