

DUPLICATION OF LANGUAGE SERVICES BETWEEN: NATIONAL LANGUAGE SERVICES • PANSALB • CRL

2011/12 -2014/15

BACKGROUND

The state is constitutionally required to take practical and positive measures to elevate the status and use of all languages. This important national language function is carried out largely by three entities, whose mandates overlap significantly.

INSTITUTIONAL SPACE

• NATIONAL LANGUAGE SERVICE DIRECTORATE -

The purpose of the National Language Service directorate is to promote and develop South Africa's official languages.

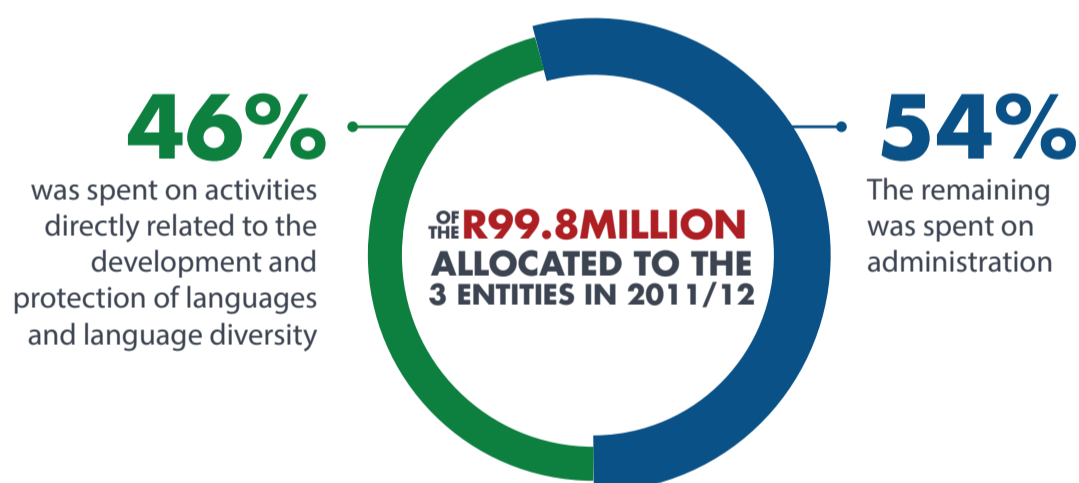
• **THE LINGUISTIC RIGHTS UNIT OF THE COMMISSION FOR THE PROMOTION AND PROTECTION OF THE RIGHTS OF CULTURAL, RELIGIOUS AND LINGUISTIC COMMUNITIES (CRL)** - its mandate is to build respect for the rights of all cultural, religious and language groups.

• **THE PAN SOUTH AFRICAN LANGUAGE BOARD (PANSALB)** - to promote multilingualism in South Africa

PERFORMANCE ANALYSIS

- All three entities undertake activities the 'promotion and development of languages'.
- There is little consultation or coordination among them when planning these.
- Examples include dictionary development (under the PanSALB) and terminology development (under the **National Language Service**), as well as the protection of language rights (the **PanSALB** and the **CRL**).
- The **PanSALB's** Language Tribunal also appears to duplicate the role of the Equality Court.

EXPENDITURE PERFORMANCE



THE COSTS OF OFFICIAL LANGUAGES ACT The Act requires all national departments, national public entities and enterprises to have a language unit. The cost of setting up and running these units across national departments and public entities could be as high as

R592 MILLION PER YEAR

COSTING MODEL AND SCENARIOS

SCENARIO 1:

THE STATUS QUO WITH SOME EFFICIENCY SAVINGS ARE INCLUDED
TOTAL PROJECTED SAVINGS ARE BETWEEN **R5.4 MILLION** & **R6 MILLION**

SCENARIO 2:

THE PANSALB IS DOWNSIZED TO A BOARD
TOTAL PROJECTED SAVINGS UNDER THIS SCENARIO ARE BETWEEN **R30 MILLION** & **R38 MILLION** PER YEAR
OVER THE MEDIUM TERM, APPROXIMATELY R100 MILLION COULD BE REALLOCATED TO TECHNOLOGY AND LANGUAGE DEVELOPMENT

SCENARIO 3:

The **PanSALB** is closed down and its functions either transferred either to the **National Language Service** or other institutions or discontinued. The language function of the **CRL** could be moved to the **Equality Court**. Total projected savings under this scenario are **R34.9 million** per year

POSTSCRIPT

The CRL has the power to adjudicate disputes around language issues, but in view of its capacity constraints has largely referred these matters to the Equality Court. If the language tribunal were transferred to the Equality Court, it would make sense for other CRL matters relating to language to be transferred to the Court as well.